



A Part of World Education, Inc.



WORLD EDUCATION

---

# **NATIONAL CONFERENCE ON EFFECTIVE TRANSITIONS IN ADULT EDUCATION**

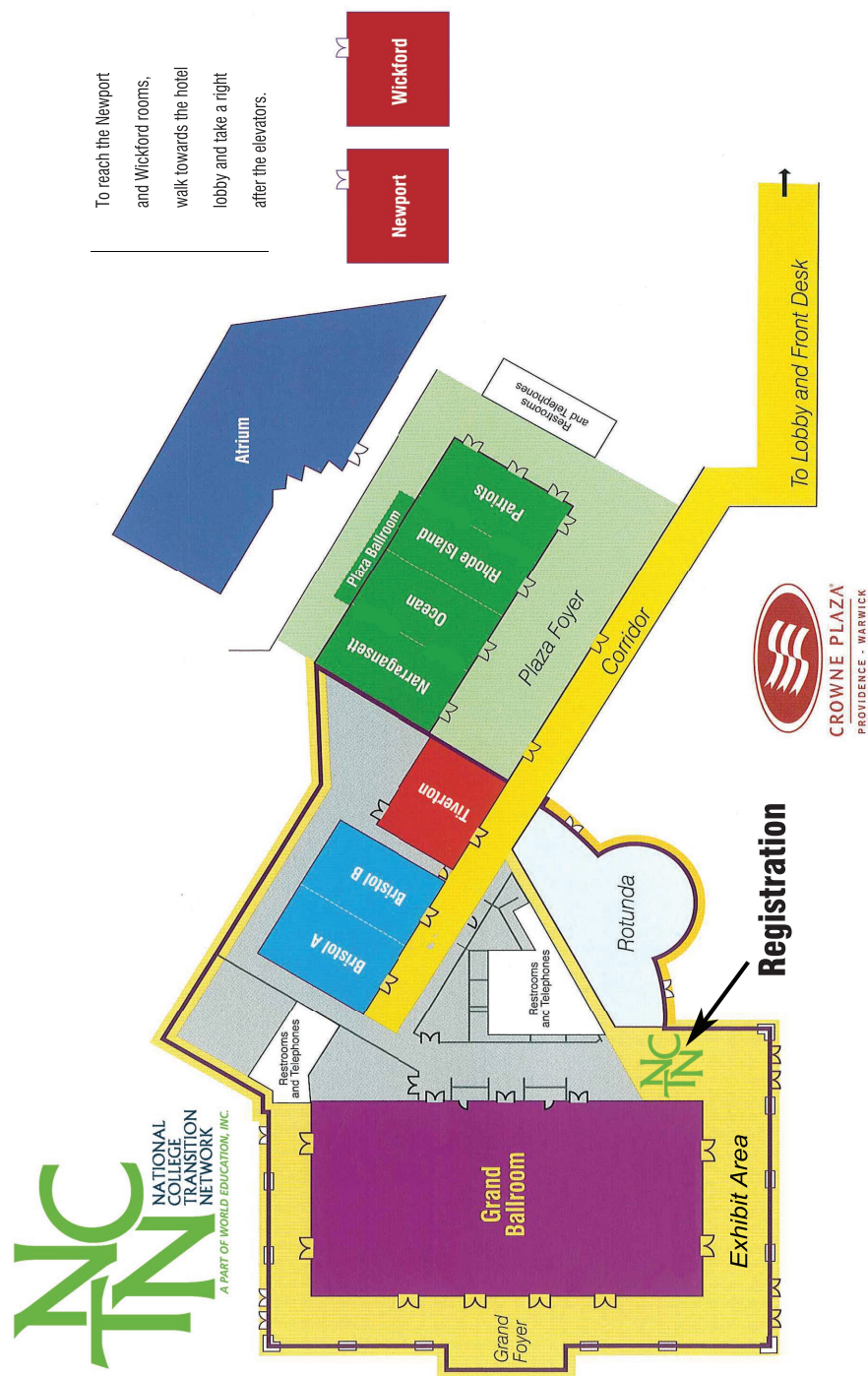
## **CONNECT & ENGAGE**



---

**CROWNE PLAZA HOTEL**  
*Providence - Warwick*

**NOVEMBER**  
13 – 15, 2017



Greetings colleagues:

Welcome to the eleventh national conference on Effective Transitions in Adult Education! The NCTN team is excited to once again engage colleagues and experts from across the country for inspiration, support, and learning. Gathering to affirm a shared vision of access to educational and economic opportunity for adult learners is more important than ever. This conference is designed to strengthen our practice and catalyze collaboration as we experience changes in the national landscape that affect our work at the local level.

The preconference sessions, concurrent workshops, keynote speeches, Translating Policy to Practice Panel: Building and Sustaining Multi-Agency Collaborations, Innovation Workshop: Advancing Connection through Dialogue, and World Education's EdTech Center Panel: Fostering Technology Skills & Tools for Learning & Employability for All are offered with the changes of the field in view.

We wish to thank Citizens Bank, GED® Testing Service, Aztec Software, and WES Global Talent Bridge for helping to make this conference possible. Their support of improving preparation and access to college, training, and careers for adults is important and appreciated. We also wish to thank all of the presenters for sharing their time and expertise.

Please share your evaluative comments to ensure that we build on the success of this conference as we plan for the 2018 event. We hope that you will leave this conference energized with fresh ideas to implement during the coming year and a commitment to stay connected and engaged!

**Ellen Hewett**, Director

**Priyanka Sharma**, NCTN and Conference Coordinator

**Sandy Goodman**, Director Career Pathways

**Silja Kallenbach**, Vice President, U.S. Division/World Education

**Ben Bruno**, Instructional Technologist

**Sydney Breteler**, Conference Associate

**Ebony Vandross**, Conference Associate



**SUNDAY, NOVEMBER 12, 2017**


<b>6:00 PM – 8:00 PM</b>	Conference Registration <i>Grand Foyer</i>
<b>1:00 PM – 6:00 PM</b>	IET Design Institute <i>Tiverton</i>

**MONDAY, NOVEMBER 13, 2017**

<b>8:00 AM – 5:00 PM</b>	Conference Registration <i>Grand Foyer</i>
<b>8:30 AM – 12:30 PM</b>	IET Design Institute <i>Tiverton</i>
<b>9:00 AM – 12:00 PM</b>	Preconference Sessions
<b>1:00 PM – 2:30 PM</b>	Workshop Session I
<b>2:45 PM – 4:15 PM</b>	Workshop Session II
<b>4:30 PM – 6:00 PM</b>	EdTech Panel - Fostering Technology Skills & Tools for Learning & Employability for All <i>Rotunda</i>
<b>6:00 PM – 7:30 PM</b>	NCTN Reception <i>Rotunda</i>

**TUESDAY, NOVEMBER 14, 2017**

<b>7:30 AM – 4:00 PM</b>	Conference Registration <i>Grand Foyer</i>
<b>8:00 AM – 9:00 AM</b>	Breakfast & Exhibits Opening <i>Grand Foyer</i>
<b>9:00 AM – 10:00 AM</b>	Keynote Speaker - Martha Kanter <i>Grand Ballroom</i>

<b>10:15 AM – 11:45 AM</b>	Workshop Session III
<b>11:45 AM – 12:45 PM</b>	Networking Lunch & Student Speaker Keynote <i>Grand Foyer</i>
<b>1:00 PM – 2:30 PM</b>	Workshop Session IV
<b>2:45 PM – 3:30 PM</b>	Exhibitors Showcase & Refreshments Break Sponsored by  Citizens Bank® <i>Grand Foyer</i>
<b>3:30 PM – 5:00 PM</b>	Workshop Session V

**WEDNESDAY, NOVEMBER 15, 2017**

<b>7:30 AM – 2:00 PM</b>	Conference Registration <i>Grand Foyer</i>
<b>7:30 AM – 8:30 AM</b>	Breakfast <i>Grand Foyer</i>
<b>8:30 AM – 10:00 AM</b>	Innovation Workshop - Advancing Connection Through Dialogue <i>Grand Ballroom</i>
<b>10:15 AM – 11:45 AM</b>	Workshop Session VI
<b>12:00 PM – 1:45 PM</b>	Lunch & Translating Policy to Practice Panel - Connect and Engage: Building and Sustaining Multi-Agency Collaborations <i>Grand Ballroom</i>

**Free WiFi is available throughout the conference!**

Network name: *CrownRIWK\_Meeting*  
 Password: *Commerce1*

**FOR DETAILED PRESENTER BIOS AND WORKSHOP DESCRIPTIONS**

visit [2017nctnconference.sched.com](http://2017nctnconference.sched.com)

**SUNDAY, NOVEMBER 12, 2017**

6:00 PM - 8:00 PM

**Conference Registration***Grand Foyer***IET Design Institute**

1:00 PM - 6:00 PM

**The Nuts and Bolts of Designing IET Programs: Models, Tools, and Tips for Success**

Carol Clymer, Institute for the Study of Adult Literacy and Goodling Institute for Research in Family Literacy at Penn State, Ellen Hewett, World Education, Inc., and Andy Nash, World Education, Inc.

*Tiverton*

This 1½-day interactive Institute, presented by the National College Transition Network at World Education and the Institute for the Study of Adult Literacy, focuses on three themes that are key to successful Integrated Education and Training (IET) program planning and implementation in the context of WIOA: IET program design considerations and options; partnerships with training providers, employers, and social supports; and basic skills curriculum development for IET programs.

The Institute will be interactive, with many opportunities for networking and learning from colleagues, including IET program presenters. Participants will receive hands-on training to use the tools that are provided and be encouraged to adapt them to their own contexts. They will leave the Institute with a plan of action for designing their own IET program and developing basic skills curriculum for it.

**MONDAY, NOVEMBER 13, 2017**

8:00 AM - 5:00 PM

**Conference Registration***Grand Foyer***IET Design Institute *continued***

8:30 AM - 12:30 PM

*Tiverton***PRECONFERENCES**

9:00 AM - 12:00 PM

**Stronger Together: Effective Advocacy Through Cross Sector Partnership**

Jill Holloway, RI Adult Education Professional Development Center, and Karisa Tashjian, Providence Public Library

*Bristol A*

Adult Education practitioners in Rhode Island have been involved in innovative partnerships for a decade now, leading the way in some cases to realize collective impact. As a result, adult education is already at the table when politicians and community leaders look to address a new issue, and we are more and more counted on as critical partners. The presenters will mix insights and descriptions of such initiatives, while engaging the audience to identify possible “opportunity initiatives” in their own communities, and begin an Action Plan for pursuing these initiatives after the conference.

**Workplace Education: An Interactive Case Study**

Luanne Teller, World Education, Inc., and Kathleen O’Connell, World Education, Inc.

*Salon IV*

In this preconference session, the presenters will share their experience using the Massachusetts model for workplace education, with one particular employer as a case study. You will learn how they identified the employer partner, designed and carried out a needs assessment, and implemented the program, and you will see sample curricula and have the opportunity to begin planning a contextualized lesson using authentic workplace materials that are aligned with the College and Career Readiness Standards. The presenters will share interim project evaluation results, successes, and challenges, along with examples of how workplace education programs can be a win-win for both employees and employers.

**Digital Literacy: Integral to College and Career Readiness**

Priyanka Sharma, National College Transition Network (NCTN)  
at World Education, Inc.

*Bristol B*

What does it mean to be “digitally literate?” If students know how to use their mobile devices, why is it necessary to teach digital literacy? How can we integrate digital literacy into curriculum and instruction? What should be the role of technology in the classroom? Are these questions keeping you up at night? Come join us at this preconference session and we will tackle the answers together. We will explore ideas and models for incorporating digital literacy in your programming and share a multitude of tools and resources to help foster your students’ digital skills to help them thrive in their academic, professional, and personal lives. Bring your device!

**SESSION I**

1:00 PM - 2:30 PM

**Nudging Community College Students to Success Using Personalized, Interactive Text Messaging**

Ross O’Hara, Persistence Plus LLC

*Salon V*

Behavioral science offers many ways to “nudge” students to greater success. Learn how Persistence Plus, in collaboration with Jobs for the Future, leveraged behavioral nudges and intelligent software to increase persistence among community college students in Ohio and Virginia. Participants will hear more about a nudging model of student support and discuss potential applications among adult education populations.

**Year One as a Transition Specialist: Lessons to Share**

Marissa Thornton, Hawkeye Community College

*Salon I*

What is central to effectively assisting adults to successfully transition from adult basic education to college credit coursework and the workforce? Attendees will be encouraged to join me in reflection and sharing of lessons learned as we discuss effective transitions.

**Virginia’s Career Pathways IET Blueprint for All Skill Levels**

Kate Rolander, Virginia Adult Learning Resource Center, and Vic Sanborn, Virginia Adult Learning Resource Center

*Salon II*

This interactive session explores the Virginia Career Pathways IET Blueprint, a new online tool to build literacy-to-postsecondary education pipelines that align partnerships, sector strategies, and adult education principles to connect learners at all skill levels to employment, vocational training, and higher education through an integrated system with wrap-around supportive services.

**Infusing College and Career Readiness Skills in the Academic Classroom**

Dorothy Smith, Norwich Adult Education, Amanda Nowak, Norwich Adult Education, and Gina Conover, Norwich Adult Education

*Bristol A*

Learn about an innovative way to deliver essential college and career readiness skills embedded in academic classroom instruction. Activities that reinforce career, college and job readiness skills, along with relevant graded assignments, are delivered in a structured and sequential manner, resulting in all students identifying career pathways and postsecondary plans.



**Problem Solving in a Digital World: Using PIAAC's PS-TRE to Support Learning**

Jen Vanek, IDEAL Consortium, a part of EdTech Center @ World Education, Inc.  
*Salon III*

PIAAC's Problem Solving in Technology Rich Environments (PS-TRE) is a new way to think about how we use technology to complete tasks in daily life, work, and schooling, and the issues that might arise as we employ those technologies. This presentation defines the components of PS-TRE and explores how teachers can use them to help learners to develop skills to flexibly use digital technologies in learning. Teachers will view and discuss several example instructional activities.

**Attaining Diversity & Building Equity through Hiring Program Graduates**

Don Sands, X-Cel Education, Amarfi Sanchez, X-Cel Education,  
and Emmanuel Knaggs, X-Cel Education  
*Bristol B*

In this workshop we will explore the strategy of hiring program graduates to increase diversity of the program staff. A team from X-Cel Education in Boston will share the practices, challenges, and advantages of this practice through their experience. 65% of X-Cel Education's staff are X-Cel program graduates.

**Focus on Meaning: Strategies for Editing Student Writing**

Peter Terres, FrontLine Words, and Michael Farma, Boston Centers  
for Youth & Families  
*Tiverton*

When editing ABE or ELL papers, focusing on errors can be dispiriting for teacher and student. In this experiential workshop, participants will use and discuss three simple techniques to focus on the meaning of written work. Focusing on meaning helps to establish a partnership, and can motivate students.

**Standing Out in the Crowd: Finding and Aligning Effective OER**

Jeff Goumas, CrowdED Learning  
*Salon IV*

Open Education Resources hold incredible promise for revolutionizing adult education, but they've been slow to reach their potential. Participants will explore barriers to widespread adoption of OER, review effective OER and strategies for implementation, and learn about new initiatives dedicated to identifying, curating, and aligning the best available OER.

**SESSION II**

2:45 PM - 4:15 PM

**Creating Targeted Services for Internationally-Trained Immigrants**

Katherine Gebremedhin, WES Global Talent Bridge, and Nicole Pumphrey,  
Welcoming Center for New Pennsylvanians  
*Tiverton*

In this session, WES Global Talent Bridge and the Welcoming Center for New Pennsylvanians will discuss strategies and highlight best practices that help immigrants with international education and experience achieve their academic and professional goals. This interactive session will equip participants with tools and information to aid in the development of more targeted services.

**Preparing Young Adults for Postsecondary Transition**

Cynthia Bell, Literacy Assistance Center  
*Salon IV*

Transitioning to college or career can be daunting for young adults and preparing them can be challenging. In this session, we will discuss how to develop academic plans for learners with aspirations of postsecondary education and learn strategies for building employability behaviors, which are needed for success in college and careers.

**Undocumented and DACA-mented Students: Supporting a Population in Limbo**

Aaron Reyna, Restore Education

*Salon III*

This presentation encases Restore Education's dedication to supporting students of all backgrounds, specifically students that are undocumented and DACA-mented (students that hold no social security number). The presenter will focus on the different legal statuses of immigrants, the college application process for this population, and financial aid resources available.

**Stats and Strategies to Retake the Immigration Narrative**

Denzil Mohammed, The Immigrant Learning Center, Inc.

*Bristol B*

Learn the latest immigration data, facts to refute myths and stereotypes, and research-based messaging and framing strategies to counter the prevailing narrative. Afterwards, apply this knowledge in different scenarios through interactive group exercises. In this way, teachers can better serve, empower and advocate for their immigrant students.

**Learning from an Evaluation of ESOL Bridge-to-College Programs**

Lisa Soricone, Jobs for the Future, and Lois Joy, Jobs for the Future

*Salon I*

Adult immigrants face particular challenges transitioning to college. Presenters from Jobs for the Future will share the results of an evaluation of four bridge-to-college programs specifically designed to support adult English language learner transitions to college, training or work. Attendees will discuss implications for practice, policy and research.

**Professional Goal Setting and Transitions Beyond the ESL Classroom**

Haydee Rodriguez, Baltimore City Community College, and Michael Carlo, Baltimore City Community College

*Bristol A*

How can adult English language learners (ELLs) transition from the ESL classroom to postsecondary programs to better prepare them to succeed in the U.S. and help providers meet WIOA requirements? This session will demonstrate how a collaborative approach—with the instructional specialist, the ESL transition specialist, and teachers who have successfully implemented professional goal setting activities in the classroom—motivates adult ELLs to think beyond the ESL classroom and consider postsecondary educational and job training options.

**Demystifying Blended Learning: IDEAL Consortium Member States Lead the Way**

Jen Vanek, IDEAL Consortium, a part of EdTech Center @ World Education, Inc., Sherry Lehane, RIFLI at the Providence Public Library, and Stephanie Bulgrin, Arizona Department of Education

*Salon II*

Blended learning combines classroom instruction with learners working independently and collaboratively using digital media. This session reviews relevant research and models of blended learning in ABE contexts and describes examples used across the US, including innovative work being done in IDEAL Consortium member states. Participants will leave the session with ideas about how to support personalized and accelerated learning and flexible models for classroom instruction as part of a blended learning model.

**EDTECH PANEL**

4:30 PM - 6:00 PM

**Fostering Technology Skills & Tools for Learning & Employability for All**

Sponsored by EdTech Center @ World Education, Inc.

*Rotunda*

From the Adult Literacy XPrize testing apps for adult basic education to companies competing to develop algorithms for assessing skills and matching potential employees with employers, there is increased attention to the potential of technology to prepare lower skilled adults for higher education and employment. At the same time, conversations on the “Future of Work” underscore the need to help our current and future workforce develop coding and other higher technology and critical thinking skills to remain relevant and employable. Panelists will share emerging best practices and national initiatives in which new technologies are helping adult learners overcome traditional barriers to college and career advancement.

**Panelists:**

- Jen Hetzel Silbert, Employer Outreach and Engagement, TechHire Rhode Island
- Mitch Rosin, Consultant, CASAS and Aztec Software
- Karisa Tashjian, Director of Education, Providence Public Library
- Alison Ascher Webber, Director of Strategic Initiatives, EdTech Center @ World Education, Inc.

**Moderator:** Jen Vanek, IDEAL Consortium, a part of EdTech Center @ World Education, Inc.

6:00 PM - 7:30 PM

**NCTN Reception***Rotunda*

Celebrate years of learning and networking! Join the NCTN team at the reception to honor all who have helped to make the conference an annual success.

**TUESDAY, NOVEMBER 14, 2017**

7:30 AM - 4:00 PM

**Conference Registration***Grand Foyer*

8:00 AM - 9:00 AM

**Breakfast & Exhibits Opening***Grand Foyer***PLENARY SESSION**

9:00 AM - 10:00 AM

*Grand Ballroom*

**Keynote Speaker:** Martha Kanter, Executive Director of the College Promise Campaign and former Under Secretary of Education at the U.S. Department of Education

**SESSION III**

10:15 AM - 11:45 AM

**GED® Program Update**

Adora Beard, GED® Testing Service

*Rhode Island-Patriots*

The GED® Program is a comprehensive set of services aligned to the GED® test. Many aspects of the program result in performance data that is of interest to educators and other stakeholders.



**Motivational Interviewing in Adult Education**

Andjela Kaur, University of Massachusetts at Boston  
*Tiverton*

Motivational Interviewing (MI) is a form of empathic dialogue. It is designed to strengthen an individual's motivation to meet their goals by eliciting and exploring person's own reasons for change and exploring the resistance that arises in the process of change. This interactive workshop is an overview of the model and its applications in adult learning.

**Accelerating Opportunity: A Model that Works for Underprepared Adult Learners**

Barbara Endel, Jobs for the Future, Sandy Goodman, National College Transition Network (NCTN) at World Education, Inc., and Lisa Soricone, Jobs for the Future  
*Narragansett-Ocean*

What if you could find a way to help students earn postsecondary credentials at the same time they are strengthening their foundational skills? Accelerating Opportunity, an integrated pathways model, did just that. Come hear about the model and its successful outcomes.

**Workforce Training and High School Equivalency for ESL Students**

Kelli Rhodes, Restore Education, and Kerri Rhodes, Restore Education  
*Bristol A*

This session will focus on creating options for ESL students beyond literacy. Considering the needs of this population, the presenters will talk about how to build programs that will prepare students for the workforce, training, or other postsecondary options.

**Professional Learning Communities for Competency-Based Learning**

Donna Chambers, Chariho School District/RI Adult Education, and Bonnie Taylor, Genesis Center  
*Bristol B*

Professional Learning Communities (PLC) utilize competency-based learning along with micro-credentialing and are indispensable tools for sustaining a competency-based adult education professional development system. Micro-credentialing supports professional learning by isolating specific teaching competencies that are personalized and relevant. Through a professional learning community, paired with a micro-credentialing system, the practitioner earns a credential by providing evidence using artifacts and student work to validate the mastery of the skill. We will share details and guidelines for both PLCs and micro-credentialing during this workshop.

**Preparing Adult ESL Teachers to Meet Today's Rigorous Language Demands**

Betsy Parrish, Hamline University  
*Newport*

Driving forces in Adult ESL demand rigorous instruction that moves beyond life skills. In this session, learn about freely available LINCS ESL Pro materials on infusing academic language and critical thinking into instruction.

**How Investment in Technology Can Accelerate and Expand Collective Impact in Adult Learning**

Mitch Rosin, Consultant, Aztec Software and CASAS, Jen Vanek, IDEAL Consortium, a part of EdTech Center @ World Education, Inc., Alison Ascher Webber, EdTech Center @ World Education, Inc.  
*Wickford*

The use of technology is crucial to the success of WIOA under all Titles. This workshop will examine the use of technology to achieve two key goals in adult education: 1) accelerating learning through reaching more adult learners,

extending learning opportunities, and differentiating instruction in unique and innovative ways, and 2) expanding collective impact on adult education and economic development through breaking the silos among service providers. This workshop is based on a white paper published jointly by Aztec Software and EdTech Center @ World Education, Inc.

## **NETWORKING LUNCH & STUDENT SPEAKER KEYNOTE**

11:45 AM - 12:45 PM

*Grand Ballroom*

**Keynote Speaker:** Sidonie Gbazale, Graduate of the Transition to College Program at RIRAL and the School of Nursing at Community College of Rhode Island

## **SESSION IV**

1:00 PM - 2:30 PM

### **Accounting and Bookkeeping Certificate for English Language Learners**

Irene Chalek, Northern Essex Community College, Delia Duran-Clark, Northern Essex Community College, Eva Balogh, Northern Essex Community College, and Joanna Pushee, Northern Essex Community College

*Newport*

The Northern Essex Community College Center for Adult Education IELCE program accelerates students' educational and training outcomes in literacy and English language acquisition and the rights and responsibilities of citizenship and civic participation. Learn about how NECC accomplishes these goals through the Accounting and Bookkeeping Fundamentals Certificate program for ELLs taught concurrently with contextualized ESOL.

### **STEM: Engaging Adult Learners with the Career Pathways of Tomorrow**

Olivia Mayer, Pre-College Academic Programming at LaGuardia Community College

*Rhode Island-Patriots*

Jobs in the STEM field are some of the fastest-growing and highest-paid in America. Learn how LaGuardia Community College's Adult and Continuing Education division is currently providing STEM career pathway exploration to adult learners, with proven methods for actively engaging adult learners with STEM knowledge and activities.

### **Competency-Based Adult Education 101: The Basics**

Donna Chambers, Chariho School District/RI Adult Education

*Tiverton*

How does Competency-Based Adult Education (CBAE) help bridge the gap to college and career readiness? This workshop will present the fundamentals of competency-based education as a pedagogy that, when applied to adult education, efficiently and effectively advances student learning. This workshop concentrates on current best practices in standards-based and evidence-based instructional management that moves from a focus on teaching to a focus on learning.

### **The National External Diploma Program**

Mitch Rosin, Consultant, Aztec Software and CASAS, and Margaret Kirkpatrick, CASAS

*Bristol B*

This workshop will provide detailed information about the National External Diploma Program (NEDP), a competency-based high school equivalency program aligned to the Adult Education College and Career Readiness Standards.

**Learning Circles Address Needs of Adults Waiting for English Classes**

Priyanka Sharma, National College Transition Network (NCTN) at World Education, Inc., David Rosen, Newsome Associates, Sherry Lehane, RIFLI at the Providence Public Library, Grif Peterson, P2PU, and Manny Reynoso, Notre Dame Education Center  
*Narragansett-Ocean*

English Now! is a learning circles pilot program to serve adult English Language Learners (ELLs) who are on waiting lists. Adults in a learning circle model use online course materials, and meet in a face-to-face group with a facilitator trained in blended learning and peer learning approaches. In this session, we will describe the learning circle framework, share the tools from the facilitator guide, learnings from the pilot, and will focus on how the participants can replicate the model within their own contexts and programs.

**Questioning, Reasoning & Applying: Promoting Inquiry-Based Learning**

Cynthia Bell, Literacy Assistance Center  
*Bristol A*

Questioning, reasoning and application skills can be challenging to integrate into math instruction. However, inquiry-based learning can aid in overcoming these obstacles. During the session, participants will engage in an activity that will model inquiry-based learning, which fosters deep understanding of mathematical concepts and applications.

**CCRS, HSE, NRS, & WIOA: Aligning Teaching & Learning in a World of Constant Change**

Jeff Goumas, CrowdED Learning  
*Wickford*

First there were the CCRS. Then the HSE. Then WIOA. Then new EFLs, from which there soon will be new NRS tests. In a time of change, both to eligible activities and testing requirements, prioritizing what to teach and how to teach it is a critical

first step in effective program design. Participants will examine intersections amongst new standards, testing, and program requirements to develop strategies for implementing effective and aligned curricula.

2:45 PM - 3:30 PM

**Exhibitors Showcase & Refreshments Break**

Sponsored by  Citizens Bank®  
*Grand Foyer*

**SESSION V**

3:30 PM - 5:00 PM

**Improving College Transition through Student Financial Health Development**

Thomas Dieter, LaGuardia Community College, and Amy Dalsimer, LaGuardia Community College  
*Newport*

In this highly interactive workshop, participants discuss the financial health factors impacting their students' effective transition to college, consider findings from LaGuardia Community College's Pre-College Financial Health Early Alert Initiative, and walk away with specific program design features and in-class tools that support student financial health and college transition.

**Workforce Preparation Strategies for Adults with LD and Other Learning Challenges**

Juliana Taymans, The George Washington University  
*Bristol B*

One aim of the new Workforce Investment and Opportunities Act is to provide employment preparation for adults who meet barriers in achieving their employment goals. The presentation focuses on ways adult educators can work with learners and employers to achieve viable employment options.

**Mapping the Community College Opportunity Structure**

Denzil Mohammed, The Immigrant Learning Center, Inc., and James Witte, Institute for Immigration Research, George Mason University  
*Bristol A*

Over 33 million young people lack postsecondary credentials. But who are they? And where are they? First-of-its-kind research provides demographic and economic portraits of millions of potential U.S.- and foreign-born community college students and detailed mapping showing proximity to campus locations offering unprecedented opportunity to grow programs and build communities.

**Using PIAAC Data to Help Unemployed Adults Transition into Postsecondary/Workforce**

Emily Pawlowski, American Institutes for Research, and Keren Hendel, American Institutes for Research  
*Tiverton*

PIAAC data provides a comprehensive educational profile of unemployed adults and the correlations between skills, educational attainment, and economic advancement. Practitioners can use the data to design programs to assist unemployed adults transition to PSE and the workforce.

**Assimilating Technology For Learning Into A Competency-Based Adult Ed System**

David Rosen, Newsome Associates, and Jen Vanek, IDEAL Consortium, a part of EdTech Center @ World Education, Inc.  
*Narragansett-Ocean*

Using technology offers solutions to differentiating instruction and personalizing learning, especially in a competency-based and blended (face-to-face and online) learning model. We will look at free and proprietary models that can help adult education teachers and administrators use technology well to enable their students to achieve mastery learning in a competency-based model or system.

**Dig Deeper with Your Adult Learners: 5 Cognitive Processing Strategies**

Shannon Sims, Mockingbird Education  
*Wickford*

The world that waits for vulnerable learners has changed. Entry-level employment demands mastery of abstract thinking and cognitive processing skills from our emerging workforce. According to the US Department of Education, weak cognitive skills are the source of over 80% of learning problems. As the demand for this type of knowledge continues to expand exponentially, adult education programs must be equipped to prepare learners to develop mastery of higher levels of abstract thinking and cognitive processing. Join us to learn the five critical cognitive processing frames for vulnerable learning populations and explore how to infuse these frames across all programming aspects.

**Bringing Classroom Content to Your Students' Mobile Devices**

Nell Eckersley, Literacy Assistance Center  
*Rhode Island-Patriots*

In this session, we will explore the benefits of making your content accessible on your students' mobile devices. We will also learn about several free tools that make mobile accessibility possible for your existing content.

**WEDNESDAY, NOVEMBER 15, 2017**

7:30 AM - 2:00 PM

**Conference Registration**

*Grand Foyer*

7:30 AM - 8:30 AM

**Breakfast**

*Grand Foyer*

## INNOVATION WORKSHOP

8:30 AM - 10:00 AM

### Advancing Connection Through Dialogue

John Sarrouf, Essential Partners

*Grand Ballroom*

Across the country and in the communities where we live and work, current issues can be challenging to discuss for us, our students, and our colleagues. We all know what it feels like to have a constructive, thoughtful and respectful conversation. What is less widely known is that cultures of communication can be taught, scaled, and replicated. When we can communicate constructively across our differences, we become more connected, more resilient, and better partners for crafting lasting solutions for any challenge. In this experiential and interactive workshop, participants will develop skills that they can apply across a wide range of settings and relationships. They will explore what fosters open, honest conversation and will practice with modes of reflection, inquiry and listening to better plan, facilitate, and engage in constructive conversations in their context.

## SESSION VI

10:15 AM - 11:45 AM

### Rhode Coders: Coding for Adult Learners

Karisa Tashjian, Providence Public Library, Don Gregory, Providence Public Library, and Larry Britt, Providence Public Library

*Tiverton*

Providence Public Library has served 130 adults in our “Rhode Coders Club,” a free 12-week basic software coding program. No coding experience is necessary, minimal computer skills are required, and ESL learners are welcome. We are eager to share our model and discuss how we help participants take the next step in coding.

### Performance-Based Assessment: Tools and Strategies

Donna Chambers, Chariho School District/RI Adult Education, and Bonnie Taylor, Genesis Center

*Newport*

A system dedicated to competency-based teaching and learning requires assessment to be at the forefront of all learning activities. Using the Quality Performance Assessment tools and protocols, this workshop highlights the importance of performance assessment as a powerful tool to drive and measure meaningful learning in the 21st century, including skills such as critical thinking, technology use, and collaboration, along with academic content. This workshop will increase participants’ assessment literacy and prepare them to craft personalized, competency-based learning activities and assessments for their learners.

### Transition Into Postsecondary Studies: Best Practices

Valerie Mann, Johnson County Community College, and Charlotte Walker, Johnson County Community College

*Bristol B*

For students with disabilities, the transition to college can be particularly challenging with mitigating factors: the changing roles of parents, self-advocacy expectations, accommodations and support, and increased academic expectations/study skills. The TIPS program at JCCC is an example of collaboration to meet these challenges.

### Love, Fear, and Dry-Erase Markers: Conducting Outreach Visits That Work

Mary Martone, Community Education Project/Holyoke Community College

*Rhode Island-Patriots*

Your program is life-changing...so how do you communicate that? A consistent flow of qualified students is critical for programmatic success, but it can be difficult to convert idle interest to enrollment. These concrete strategies will engage listeners, convey information without overwhelming, allay fear, and show students when they’re ready.



**The Early Results Are In: Improved PSE Transitions for GED® Grads**

Daphne Atkinson, GED® Testing Service  
*Narragansett-Ocean*

GED® grads are enrolling more quickly in postsecondary programs and performing better in credit-bearing coursework. Learn more about these findings and about the new ACE CREDIT program recommendations that allowing GED® grads to skip remedial education and placement exams—and possibly earn up to 10 college credit hours.

**7 Lessons for Using Cognitive Behavioral Therapy Curriculum with Vulnerable Learners**

Shannon Sims, Mockingbird Education  
*Wickford*

Due to the impacts of trauma, stress, and chronic amygdala hijacking on learning, vulnerable learners often lack the cognitive and behavioral skills necessary to navigate new cultural norms such as post secondary, workforce readiness, and middle class systems with ease and independence. Discover a cognitive behavioral curricular approach (called CBT) developed for El Salvadorian youth programs for youth challenged by gang-related violence and trauma. Based on over 60 years of research and years of practical implementation, Mockingbird's CBT curriculum teaches cognitive strategies to help youth cope and prosper in trauma-induced environments. Discover how CBT strategies engage and empower vulnerable, resistant, and reluctant learners.

**Mobile Up!: Cellphone-First and Blended Mobile Learning**

Alison Ascher Webber, EdTech Center @ World Education, Inc.  
*Bristol A*

Industry training programs in California are using cellphones to bring ESL Instruction, Career Education and Coaching to low-wage immigrant service workers who cannot attend classes. Additionally, distance and blended learning models extend and customize learning for students in programs. This workshop shares emerging best practices and models in mobile learning for lower-skill adults.

**LUNCH & TRANSLATING POLICY TO PRACTICE PANEL**

12:00 PM - 1:45 PM

**Connect and Engage: Building and Sustaining Multi-Agency Collaborations**

*Grand Ballroom*

Multi-agency collaborations are an essential foundation to effectively prepare students for college and career opportunities and to achieve the goals of the Workforce Innovation and Opportunity Act. Building on the conference theme—Connect and Engage—practitioners and policymakers will discuss the challenges, rewards, and strategic nurturing of local and state-level collaborations between Adult Education, Workforce Development, and other stakeholders. Join this conversation about policies and practices that can align and strengthen resources, services, and student outcomes.

**Panelists:**

- Dr. Brenda Dann-Messier, Commissioner, Rhode Island Office of the Postsecondary Commissioner
- Anson Green, State Director, Texas Workforce Commission
- Tim Shenk, Program Director of Community Education, Lancaster-Lebanon Intermediate Unit 13
- Chris Stanyer, Director, NexStep Alliance, a Partnership of Goodwill of Kansas & Wichita Area Technical College

**Moderator:** Sandy Goodman, National College Transition Network (NCTN) at World Education, Inc.

2:00 PM

**Conference Closing**

**THE NATIONAL COLLEGE TRANSITION NETWORK** provides technical assistance and professional development services to community college, adult education, and workforce systems to design accelerated career pathways, comprehensive student support services, and effective multi-stakeholder partnerships.

The NCTN team blends sound strategy formation with evidence-based practice and sustained professional development principles; knowledge of college and career readiness, accelerated learning, and integrated education and training strategies; understanding of state and national policies; and a collaborative consulting practice.

Explore [www.collegetransition.org](http://www.collegetransition.org) to view the NCTN's tools and resources, and recent projects. Our publications include: *Integrated Education and Training: Implementing Programs in Diverse Contexts*; *The Mentoring Toolkit*; *College and Career Navigator Trainer Manual*; and the *Program Administrator Trainer Manual: Building Integrated Pathways through Collaboration*.

If you are not enjoying the benefits of NCTN membership, now is the time to join!



## WE WOULD LIKE TO THANK THE SPONSORS FOR THEIR SUPPORT.

### Aztec Software (Bronze Sponsor)

Aztec Software provides individualized, targeted, computer-based solutions that assist in mastering literacy and educational foundations, career-readiness skills, GED®/TABE® prep and financial literacy. We are committed to assisting learners make a smooth transition from secondary to postsecondary education to employment.

### Citizens Bank (Silver Sponsor)

Headquartered in Providence, Rhode Island, Citizens offers a broad range of retail and commercial banking products and services to individuals, small businesses, middle-market companies, large corporations and institutions. We understand that a good bank is at the heart of a community, and that investing in our communities enriches us all.

### GED Testing Service® (Bronze Sponsor)

GED Testing Service® provides opportunities to transform lives, support families, and build stronger communities through the GED® testing program. The GED® test, established in 1942, has helped 18 million adults earn their high school credential.

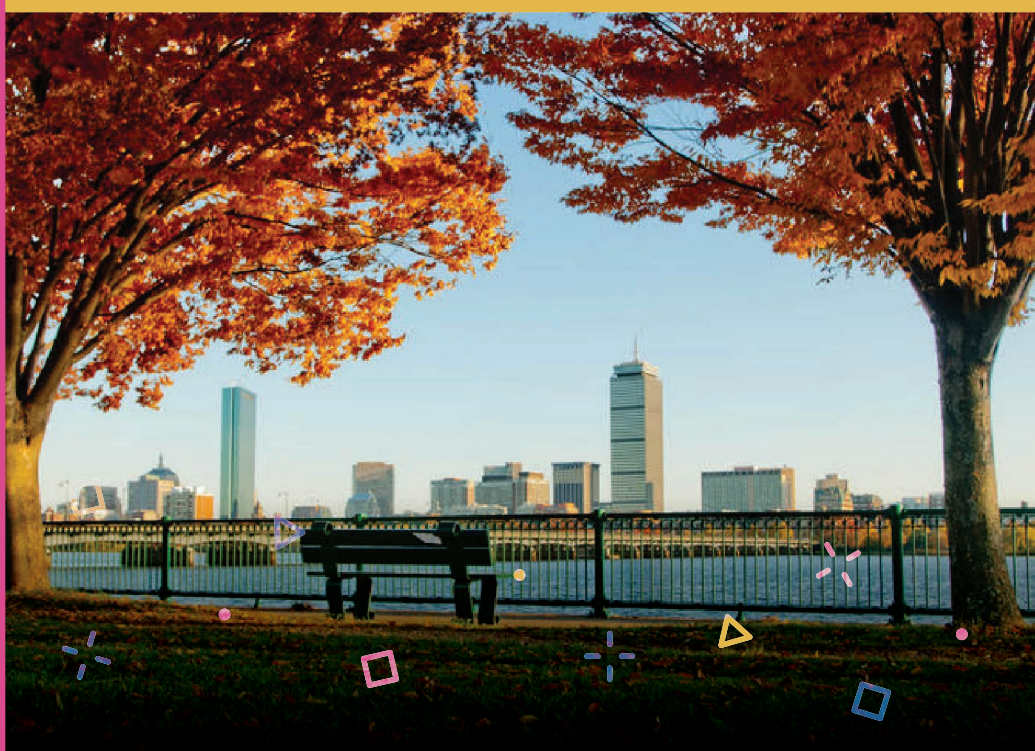
### WES Global Talent Bridge (Bronze Sponsor)

The WES Global Talent Bridge initiative helps skilled immigrants achieve their academic and professional goals. We provide resources, training and programmatic support to educators, agencies and individuals. [www.globaltalentbridge.org](http://www.globaltalentbridge.org)

### World Education, Inc.

World Education/US strengthens the effectiveness of educators, organizations, and systems to support adults, older youth, and communities to thrive.

# National Conference on Effective Transitions in Adult Education



**CAMBRIDGE, MA**  
@HYATT CAMBRIDGE

NOV. 12 - 14, 2018



WORLD EDUCATION

WWW.WORLDED.ORG



**WORLD EDUCATION, UNITED STATES**

*Strengthening the Effectiveness of Adult Education*

## KEY INITIATIVES

- EdTech Center
- LINCS Professional Development Center
- MA System for Adult Basic Education Support (SABES) Professional Development
  - › Center for Education & Career Planning
  - › Coordination Center
- MA Adult Literacy Hotline
- National College Transition Network (NCTN)
- New England Literacy Resource Center (NELRC)
- Workplace Education Services

## FEATURED RESOURCES

- **Building Bridges Across Communities**  
an instructors' toolkit for more welcoming classrooms
- **Career Awareness & Planning**  
curriculum and technical assistance
- **The Change Agent**  
a magazine for the adult education classroom
- **E-Learning**  
online professional development
- **Integrated Education and Training (IET): Implementing Programs in Diverse Contexts**  
profiles of eight programs that have developed IET programs
- **Tech Tips for Teachers and The Well**  
blogs for informing and inspiring the adult education community

For more information, or to be added to our mailing list, please contact us at:  
[literacy@worlded.org](mailto:literacy@worlded.org) or follow us on Twitter [@WorldEdUS](https://twitter.com/WorldEdUS).



# THE CHANGE AGENT

A magazine and online resource for adult education.

## Featuring:

- Topics highly relevant to students' lives
- Innovative teaching resources for classroom use
- Powerful student writings that inspire discussion
- Online audio articles and issue extras
- Information on aligning with College and Career Readiness Standards
- Articles by reading level

## Recent Issues:

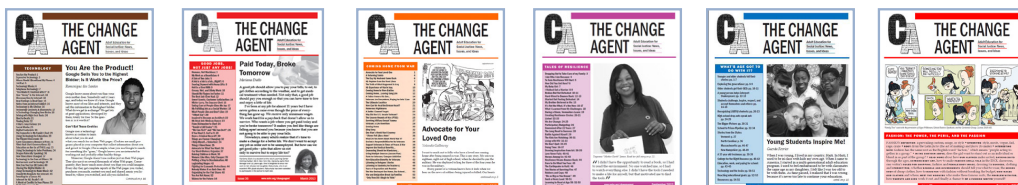
- Career Pathways
- When We Fight, We Win!
- Transportation
- Talking About Race
- Celebrations
- Prisons and Justice?



## FIND OUT MORE

[changeagent.nelrc.org](http://changeagent.nelrc.org)

617-482-9485 [changeagent@worlded.org](mailto:changeagent@worlded.org)



# Our mission is your student!



Providing a Continuum of Learning to transition from ABE to HSE Prep and beyond in a single, *student-centric* platform accessible anytime, any where and on ANY device!

Learn more about our **FREE** resources:  
(800) 273 - 0033 or email [sales@aztecsoftware.com](mailto:sales@aztecsoftware.com)



## PATHWAYS IN NURSING

Using Your Foreign Education in the United States

World Education Services presents the first in its new series of Pathways e-guides.

This guide provides guidance to internationally-trained immigrants seeking to use their foreign education in the U.S. It explores career and academic pathways in the field of nursing, as well as alternative and related careers.

### Features include:

- Strategies for achieving career success
- Charts for licensing and certification requirements
- Worksheets and guides
- Links to helpful resources

Download the e-guide: [bit.ly/gtb-nursing-pathways](http://bit.ly/gtb-nursing-pathways)



Our Expertise. Your Success.

[wes.org/gtb](http://wes.org/gtb)



## Digital Strategy for Adult Learning

### Professional Development



Online and in-person training to share best practices and foster edtech leadership.

### Innovation



Meeting learners' needs in partnership with tech developers and education and community organizations.

### Evaluation



Research, identification, and testing of new tools, emerging best practices, and delivery models.

### Advocacy



Education on the power of technology for adult learning and advocacy for greater Internet and technology access.

**We're catalyzing an EdTech movement  
to expand the reach and impact of adult education**

The EdTech Center @ World Education supports educators in integrating technology into instruction and program delivery to accelerate learning, digital literacy, and college and career readiness.

**Contact us - we're here to help!**

617.482.9485  [edtech@worlded.org](mailto:edtech@worlded.org)  [edtech.worlded.org](http://edtech.worlded.org)  [@worldedus](https://twitter.com/worldedus)

# The GED® Credential is the **BRIDGE TO A BETTER FUTURE**



# 47%

of GED® grads  
go to college  
within 3 years

# \$9000

GED® grads  
earn \$9,000  
more per year



of GED® grads  
continue to  
enroll in college  
semester to  
semester



of test-takers  
in corrections  
pass the GED®  
test

**For more information, visit [GEDtestingservice.com](http://GEDtestingservice.com)**



GED® and GED Testing Service® are registered trademarks of the American Council on Education. Used under license. Copyright © 2017 GED Testing Service LLC. All rights reserved.





A Part of World Education, Inc.



WORLD EDUCATION

44 Farnsworth Street, Boston, MA 02210

Phone: 617.482.9485 | Fax: 617.482.0617

[nctn@worlded.org](mailto:nctn@worlded.org) | [www.collegetransition.org](http://www.collegetransition.org) | [www.worlded.org](http://www.worlded.org)